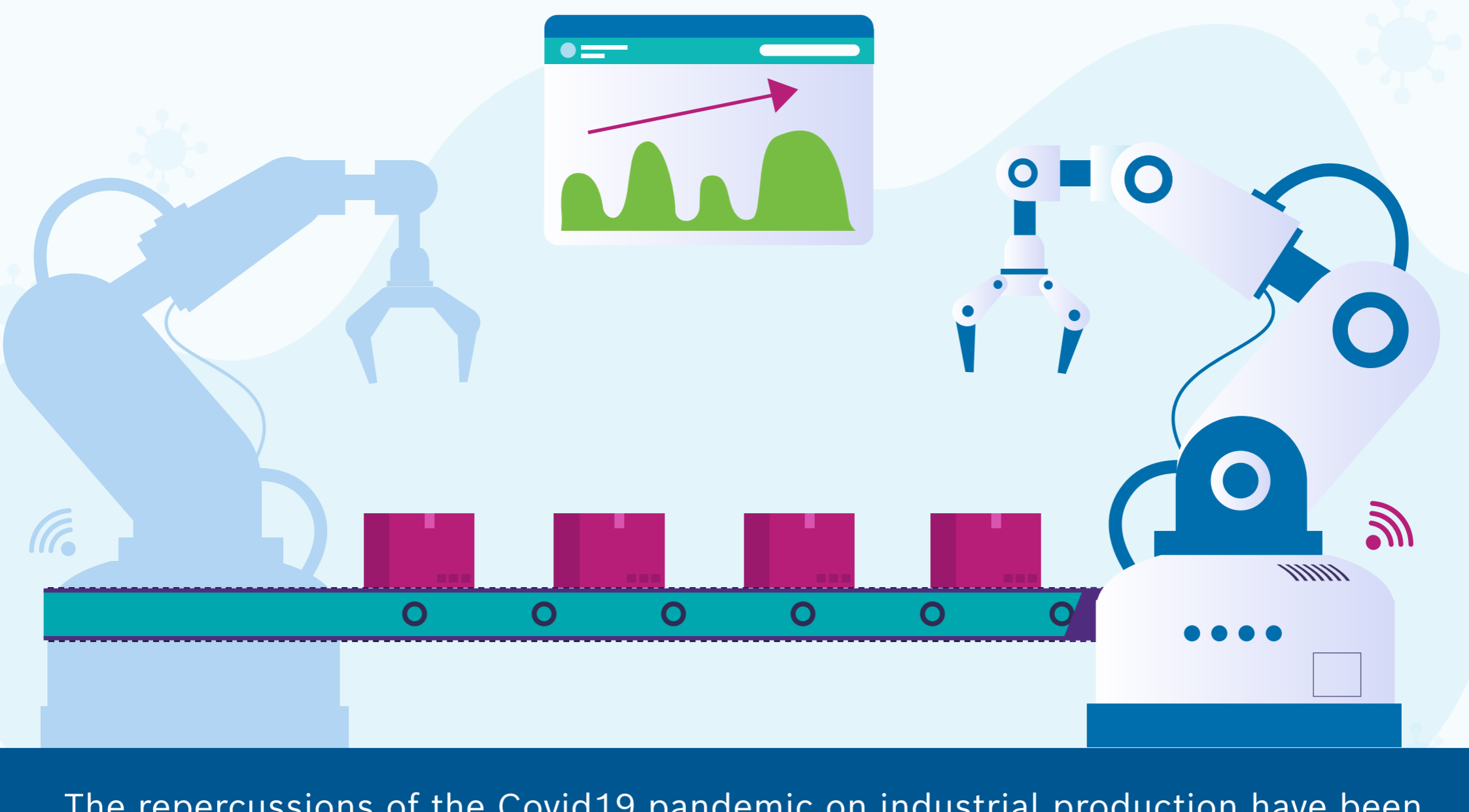


# CONNECTED, SMART, FLEXIBLE THE NEW WORLD OF MANUFACTURING



The repercussions of the Covid19 pandemic on industrial production have been far-reaching and long lasting. With supply chains being disrupted, the recovery has been slow but promising. Businesses with a progressive outlook are responding to the uncertainty by transforming their processes, work cultures and even business models.

## TECHNOLOGY BECOMES THE LEVER FOR THIS TRANSFORMATION. MANUFACTURERS TODAY NEED



Improved visibility across the supply chain



Accurate demand forecasting

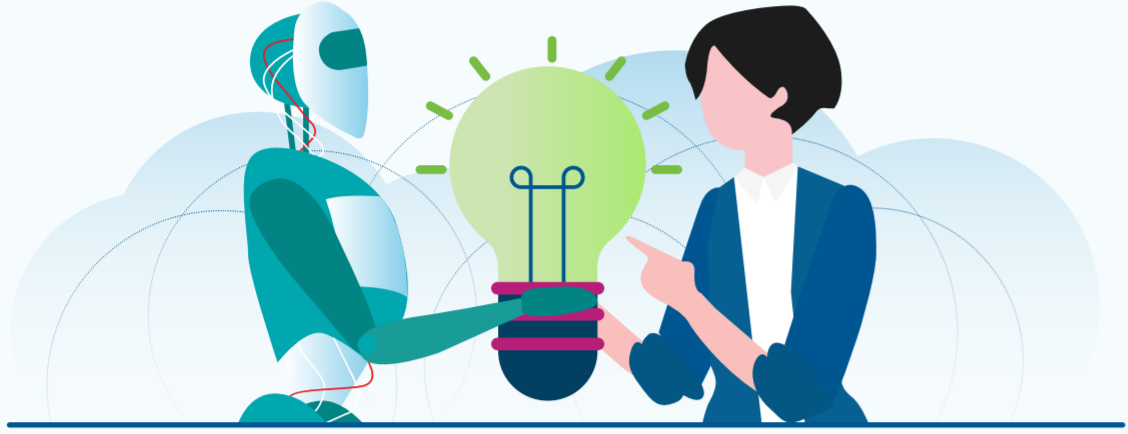


Agile manufacturing systems



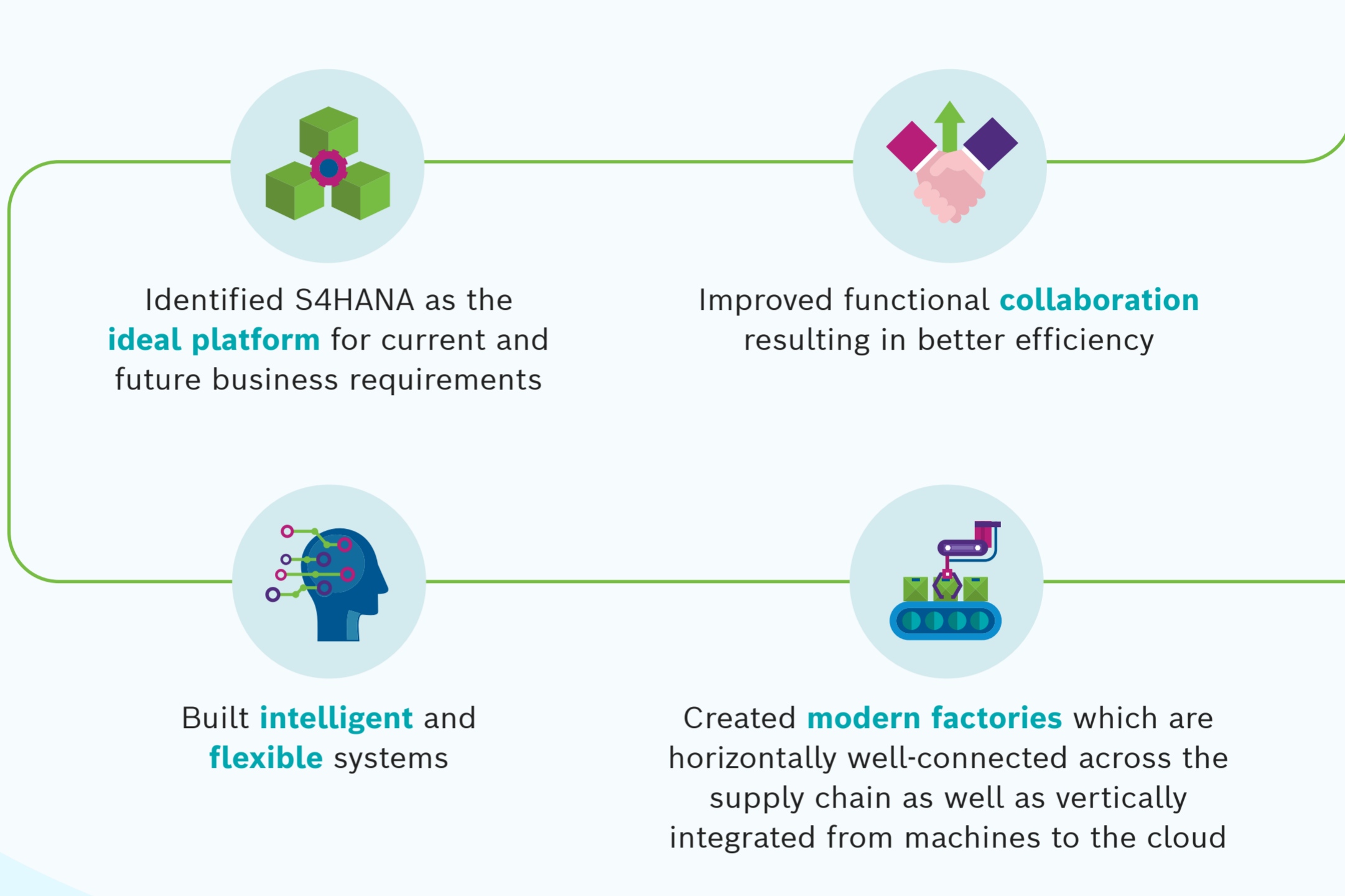
Integrated systems with intelligence

## HOW IS BOSCH HANDLING THIS CHALLENGE?



Bosch has already implemented cutting-edge **connected solutions** within the organization. Having worked across several manufacturing units and warehouses spread across geographies, we are positioned as an expert in **ERP implementation**. Bosch practitioner's approach gives us better visibility into possible challenges so we can create better, more comprehensive solutions for our customers.

## INTEGRATED ERP WITH S4HANA - JOURNEY AT BOSCH



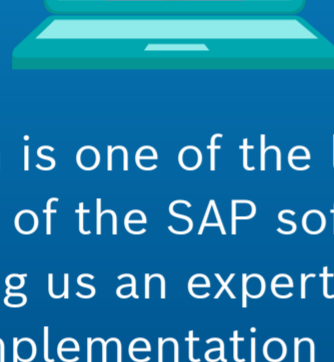
## IMPLEMENTATION OF INDUSTRY 4.0



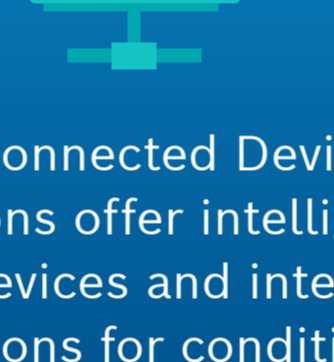
Implemented intelligent connected manufacturing solutions across **280+ manufacturing units** worldwide



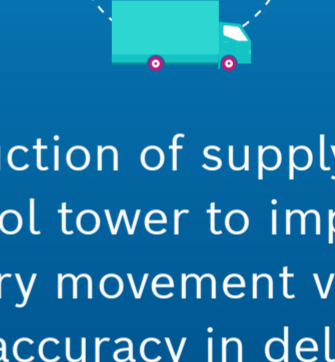
Improved supply chain efficiency across **750+ warehouses** worldwide



Bosch is one of the largest users of the SAP software making us an expert in the ERP implementation domain



Bosch Connected Devices & Solutions offer intelligent sensor devices and integrated solutions for condition monitoring and predictive maintenance



Introduction of supply chain control tower to improve inventory movement visibility and accuracy in delivery time calculations.

## ENABLING INTELLIGENT MANUFACTURING WITH MANTHANA

MantHANA is a unique manufacturing template enabling intelligent digital transformation facilitating seamless integration with the OT layer

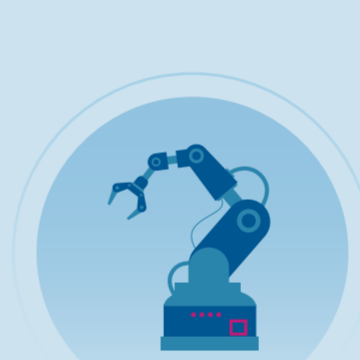
### Differentiators



Experience of user and provider



Pre-Built Solutions & Accelerators



Lean Manufacturing Expertise



ERP, MES, AI, IIoT competency

### Assets for Digital Manufacturing



IT-OT Integration Framework



Device Bridge



Energy & Utility Analytics

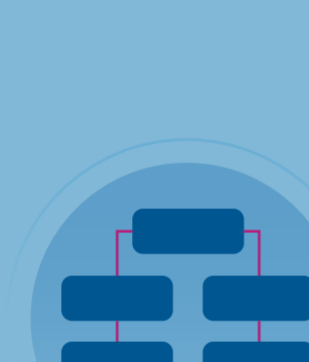


SAP Integrated Logistics solutions



Pre-built asset model for condition monitoring

### MantHANA on S/4HANA



Simplified Processes



High Performance



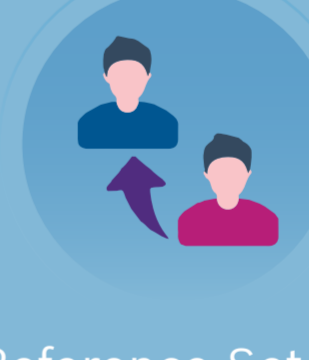
Advanced functionalities



Industry Best Practices



Business Process Scenarios



Reference Set up

## THE NEW FACE OF MANUFACTURING WITH BOSCH

Enabled with the right technologies, Bosch envisions to create factories of the future that will produce game-changing results

**Higher Visibility and Transparency**  
Shopfloor to Topfloor  
integration providing real time visibility

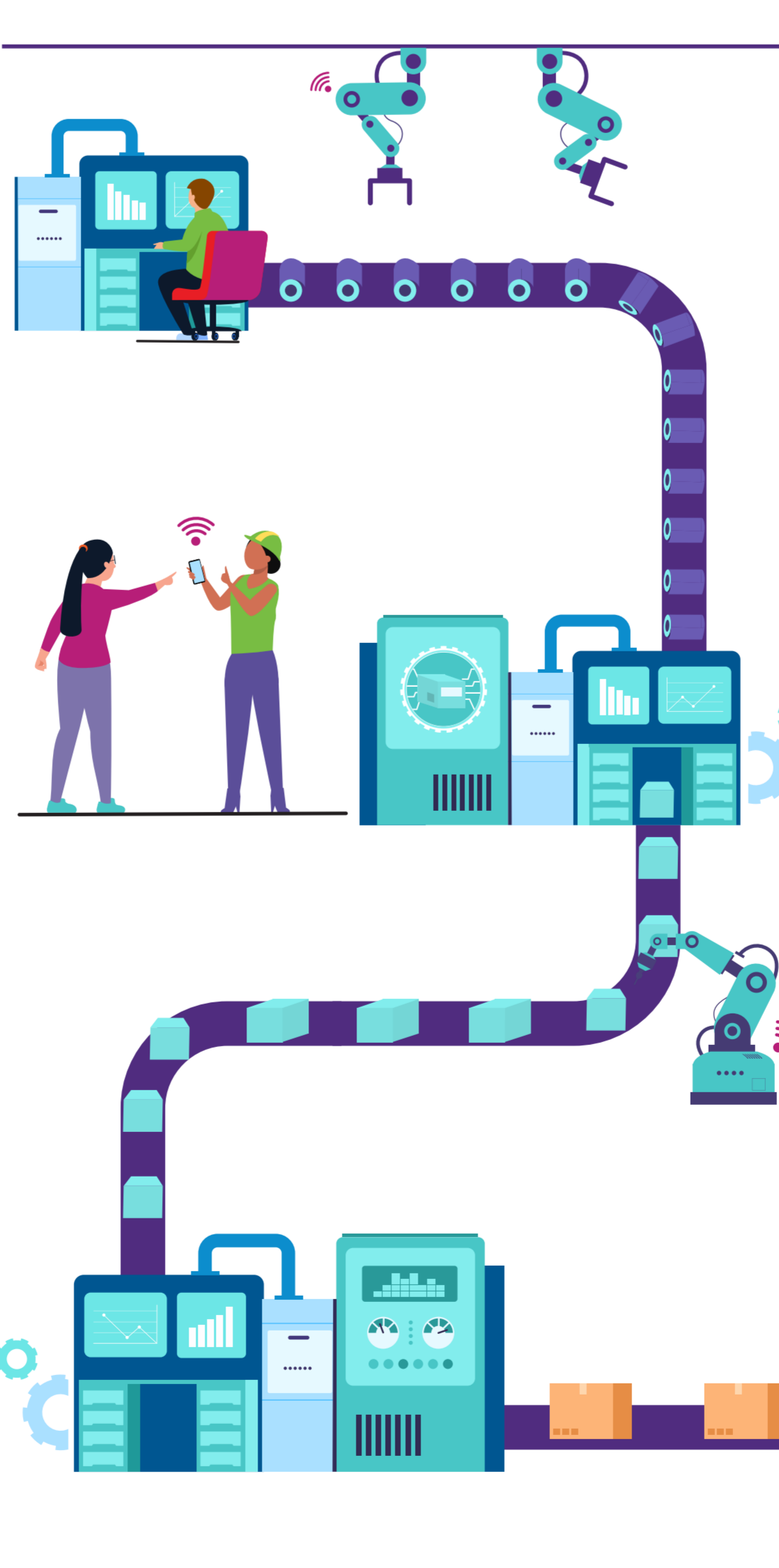
**Key Solutions:** Realtime KPIs, Dashboards on SAC

**Efficient Warehouse Operations**  
Lower cost of warehouse operations, better inventory turns, visibility on WIP

**Key Solutions:** AGVs, RFID enabled goods movement, EWM

**Flexible and Responsive Supply Chain**  
Improved compliance to Estimated delivery time on Customer Order fulfilment

**Key Solutions:** IBP, Production planning and scheduling, Track and Trace solution providing visibility on order fulfilment



**Higher Asset Reliability**  
Achieving higher plant productivity through better asset throughput, lower unplanned breakdowns

**Key Solutions:** Integrated Asset Performance Management

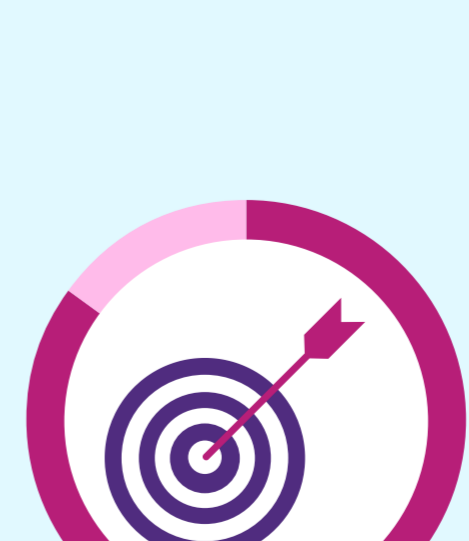
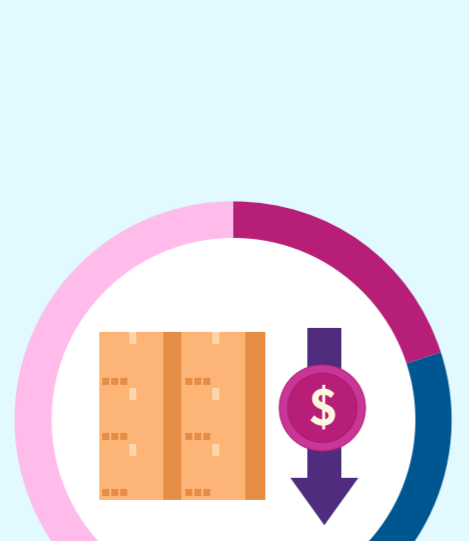
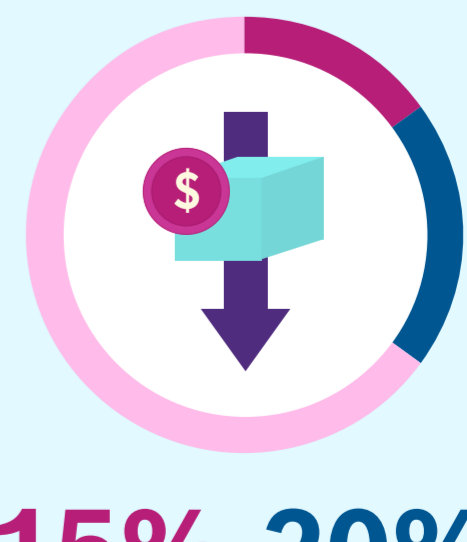
**Improved Product Quality**  
Achieving higher yield, Lower failure costs and improved First Time Right

**Key Solutions:** Early Warning Systems, Process interlocks through IT-OT integration, Advanced analytics

**Sustainable Operations**  
Achieving optimal use of Energy and utilities

**Key Solutions:** Energy analytics insights for cost optimization

## BENEFITS YOU CAN MEASURE



Choose a technology partner that has the experience, expertise and tools to help you not just strategize but also operationalize digital transformation.

